

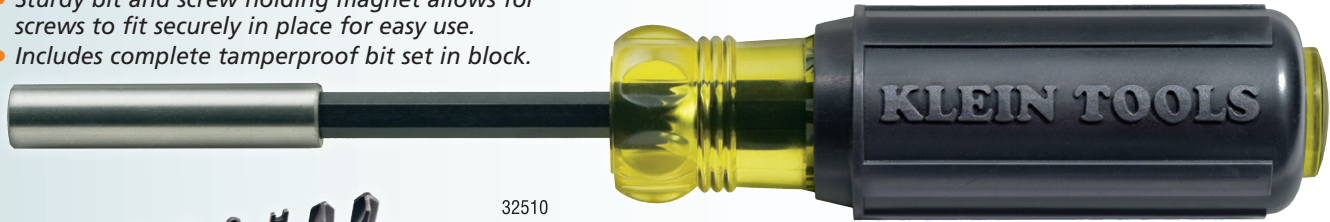
Tamperproof Screwdriver Set

KLEIN TOOLS®

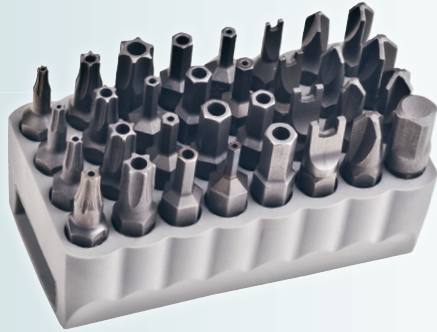


Magnetic Screwdriver with 32 Piece Tamperproof Bit Set

- Cushion-grip handle for greater torque and comfort.
- Sturdy bit and screw holding magnet allows for screws to fit securely in place for easy use.
- Includes complete tamperproof bit set in block.



32510



Cat. No.	UPC No.	Set Contains	Weight (lbs.)
32510	0-92644+		.71

Non-Ratcheting Magnetic Screwdriver w/ 32 Piece Tamperproof Bit Set

Bits Included

TORX® – T7, T8, T10, T15, T20, T25, T27, T30 and T40

Fraction Hex – 3/32", 7/64", 1/8", 9/64", 5/32", and 3/16"

Metric Hex – 2 mm, 2.5 mm, 3 mm, 4 mm, and 5 mm

Spanner – 4, 6, 8, and 10

Tri-Wing® – 1, 2, 3 and 4

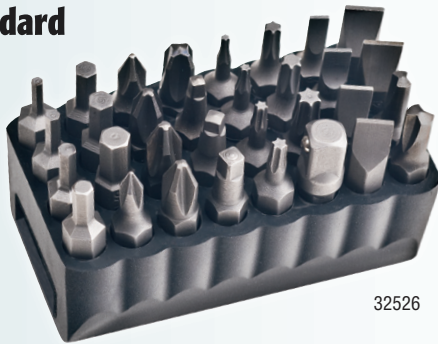
TORQ-SET® – 6, 8 and 10

1/4" square to 1/4" hex adapter to drive sockets

Magnetic Screwdriver Bit Sets

32 Piece Standard Tip Bit Set

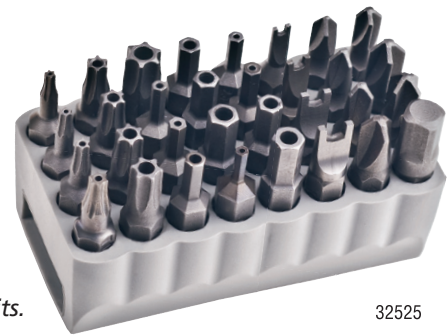
- Durable PVC black block allows for easy storage of standard bits.



32526

32 Piece Tamperproof Bit Set

- Durable PVC gray block allows for easy storage of tamperproof bits.



32525

- Block slides over most screwdriver shafts for easy bit access and storage.
- Industrial strength, heat treated steel bits for long lasting use.

Cat. No.	UPC No.	Set Contains	Weight (lbs.)
32526	0-92644+		.425

Bits Included

Hex – 5/64", 3/32", 7/64", 1/8", 9/64", 5/32" and 3/16"

Phillips – #0, #1, #2 (Qty. 3), and #3

Square Recess – #1, #2, and #3

TORX® – T6, T7, T8, T10, T15, T20 and T25

Slotted – 3-4, 5-6, 6-8, 8-10, 10-12, 12-14 screw sizes

Clutch – 5/32" and 3/16"

1/4" square to 1/4" hex adapter to drive sockets

Cat. No.	UPC No.	Set Contains	Weight (lbs.)
32525	0-92644+		.425

Bits Included

TORX® – T7, T8, T10, T15, T20, T25, T27, T30 and T40

Fraction Hex – 3/32", 7/64", 1/8", 9/64", 5/32", and 3/16"

Metric Hex – 2 mm, 2.5 mm, 3 mm, 4 mm, and 5 mm

Spanner – 4, 6, 8, and 10

Tri-Wing® – 1, 2, 3 and 4

TORQ-SET® – 6, 8 and 10

1/4" square to 1/4" hex adapter to drive sockets

TORX® is a registered trademark of Acument Intellectual Properties, LLC. TORQ-SET® and Tri-Wing® are registered trademarks of Phillips Screw Co. Assembled in USA of US and foreign components.

⚠WARNING: Always wear approved eye protection.

⚠WARNING: NOT insulated. Will NOT protect against electrical shock.

⚠WARNING: Do NOT use to pry or chisel.